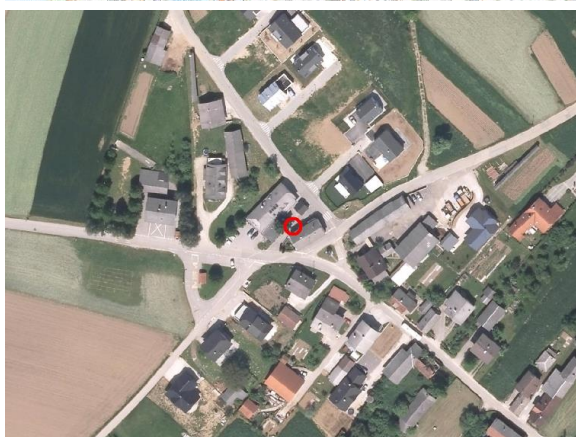
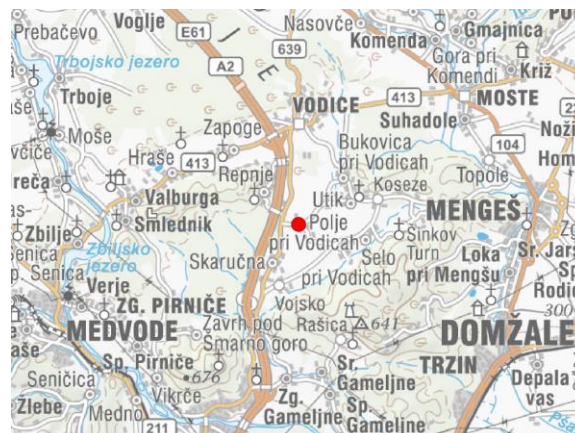
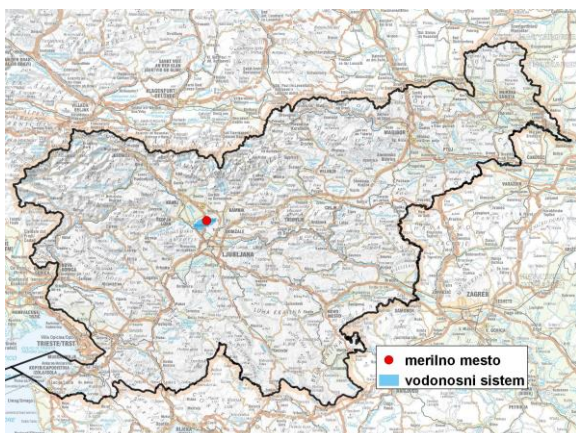


GROUNDWATER MONITORING SITE

Monitoring site code	<b>75020</b>
Monitoring site name	<b>Polje pri Vodichah (0850)</b>



**General information about the monitoring site**

<b>Aquifer</b>	Vodiško polje
<b>Groundwater body code</b>	1001
<b>Groundwater body name</b>	Savska kotlina in Ljubljansko Barje
<b>Aquifer system</b>	Vodice - Skaručna
<b>Start of observations</b>	1971
<b>End of observations</b>	-
<b>Surface altitude (m a. s. l.)</b>	323.38
<b>Last altitude of the point 0 (m a. s. l.)</b>	323.93
<b>Last altitude of the bottom (m a. s. l.)</b>	317.73
<b>D48/GK: GKY; GKX</b>	461155; 113339
<b>D96/TM: e; n</b>	460784; 113825

**Frequency of the measurements**

<b>Groundwater level</b>	continuous
<b>Temperature</b>	1 per month
<b>Specific electrical conductivity</b>	-

**Extremes 1971–2017**

<b>Groundwater level – period minimum (m a. s. l.)</b>	317.85
<b>Date of the minimum</b>	30.08.1993
<b>Groundwater level – period maximum (m a. s. l.)</b>	320.62
<b>Date of the maximum</b>	12.02.2014

**Mean values 1971–2017**

	JAN	FEB	MAR	APR	MAY	JUN	JUL	AUG	SEP	OCT	NOV	DEC	PERIOD
m a.s.l.*	319.12	319.09	319.14	319.17	319.06	318.99	318.93	318.79	318.79	319.01	319.19	319.26	319.05
m**	4.81	4.84	4.79	4.76	4.87	4.94	5.00	5.14	5.14	4.92	4.74	4.67	4.89

\* water table in meters above sea level; \*\* depth to water table in meters