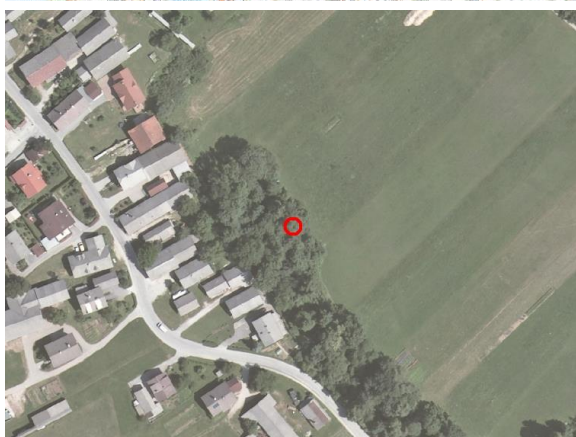
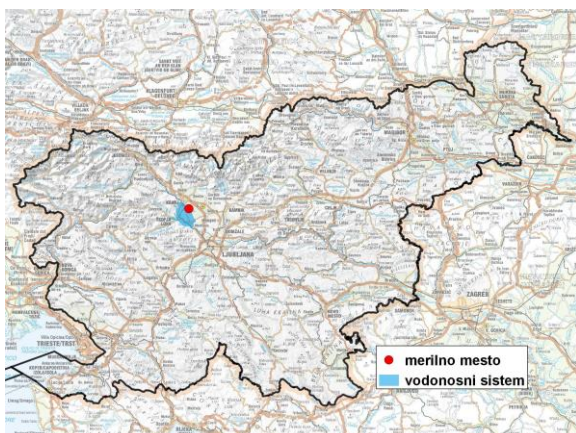


GROUNDWATER MONITORING SITE

Monitoring site code	<b>80020</b>
Monitoring site name	<b>Breg (S-3567)</b>



**General information about the monitoring site**

<b>Aquifer</b>	Sorško polje
<b>Groundwater body code</b>	1001
<b>Groundwater body name</b>	Savska kotlina in Ljubljansko Barje
<b>Aquifer system</b>	Sorško polje
<b>Start of observations</b>	1970
<b>End of observations</b>	-
<b>Surface altitude (m a. s. l.)</b>	353.30
<b>Last altitude of the point 0 (m a. s. l.)</b>	354.45
<b>Last altitude of the bottom (m a. s. l.)</b>	328.33
<b>D48/GK: GKY; GKX</b>	453244; 118668
<b>D96/TM: e; n</b>	452873; 119155

**Frequency of the measurements**

<b>Groundwater level</b>	continuous
<b>Temperature</b>	continuous
<b>Specific electrical conductivity</b>	-

**Extremes 1970–2017**

<b>Groundwater level – period minimum (m a. s. l.)</b>	334.27
<b>Date of the minimum</b>	07.02.1972
<b>Groundwater level – period maximum (m a. s. l.)</b>	345.11
<b>Date of the maximum</b>	04.11.1990

**Mean values 1970–2017**

	JAN	FEB	MAR	APR	MAY	JUN	JUL	AUG	SEP	OCT	NOV	DEC	PERIOD
m a.s.l.*	339.73	339.61	339.65	339.86	339.98	339.87	339.75	339.61	339.53	339.67	339.84	339.98	339.76
m**	14.72	14.84	14.80	14.59	14.47	14.58	14.70	14.84	14.92	14.78	14.61	14.47	14.69

\* water table in meters above sea level; \*\* depth to water table in meters