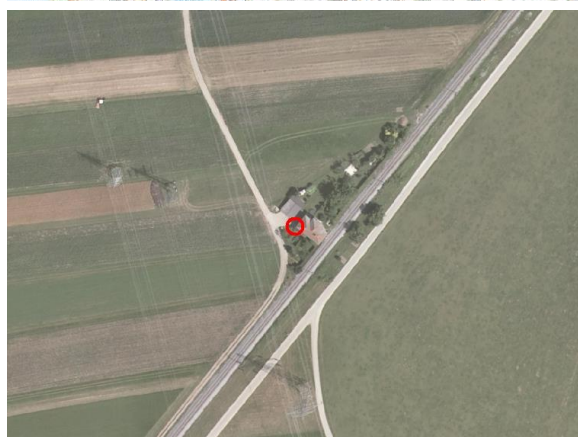
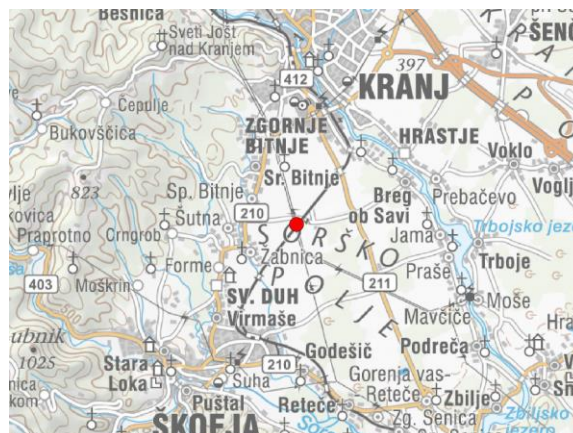
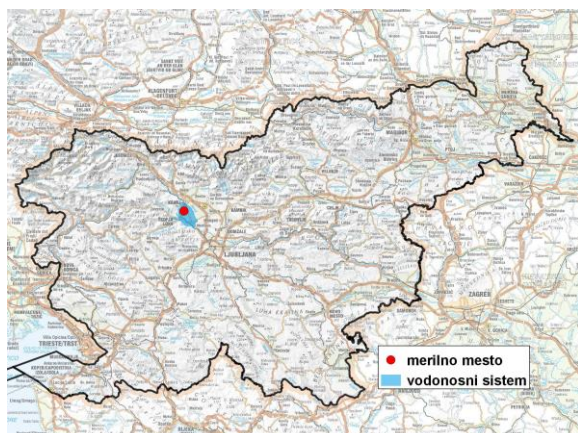


GROUNDWATER MONITORING SITE

Monitoring site code	<b>80030</b>
Monitoring site name	<b>Žabnica (0590)</b>



**General information about the monitoring site**

<b>Aquifer</b>	Sorško polje
<b>Groundwater body code</b>	1001
<b>Groundwater body name</b>	Savska kotlina in Ljubljansko Barje
<b>Aquifer system</b>	Sorško polje
<b>Start of observations</b>	1971
<b>End of observations</b>	-
<b>Surface altitude (m a. s. l.)</b>	374.60
<b>Last altitude of the point 0 (m a. s. l.)</b>	375.10
<b>Last altitude of the bottom (m a. s. l.)</b>	330.44
<b>D48/GK: GKX</b>	450175; 117635
<b>D96/TM: e; n</b>	449804; 118122

**Frequency of the measurements**

<b>Groundwater level</b>	continuous
<b>Temperature</b>	1 per month
<b>Specific electrical conductivity</b>	-

**Extremes 1971–2017**

<b>Groundwater level – period minimum (m a. s. l.)</b>	330.64
<b>Date of the minimum</b>	12.11.1971
<b>Groundwater level – period maximum (m a. s. l.)</b>	351.70
<b>Date of the maximum</b>	02.06.1997

**Mean values 1971–2017**

	JAN	FEB	MAR	APR	MAY	JUN	JUL	AUG	SEP	OCT	NOV	DEC	PERIOD
m a.s.l.*	335.46	335.24	335.20	335.46	335.30	335.07	334.91	334.68	334.59	334.92	335.40	335.62	335.15
m**	39.64	39.86	39.90	39.64	39.80	40.03	40.19	40.42	40.51	40.18	39.70	39.48	39.95

\* water table in meters above sea level; \*\* depth to water table in meters