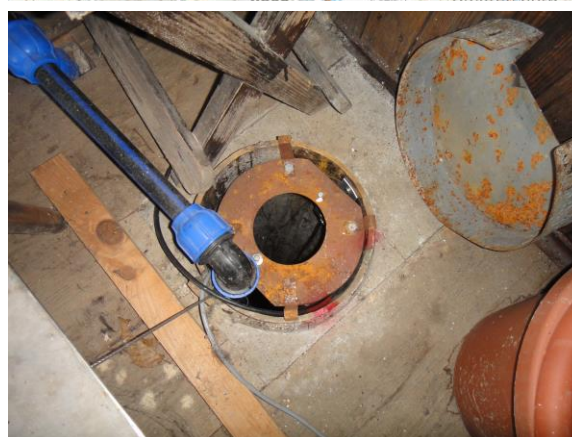
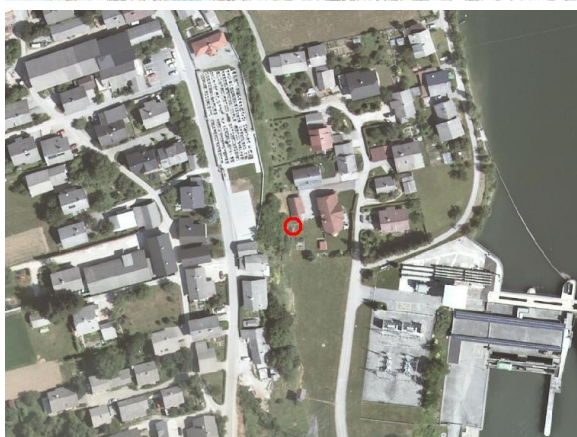
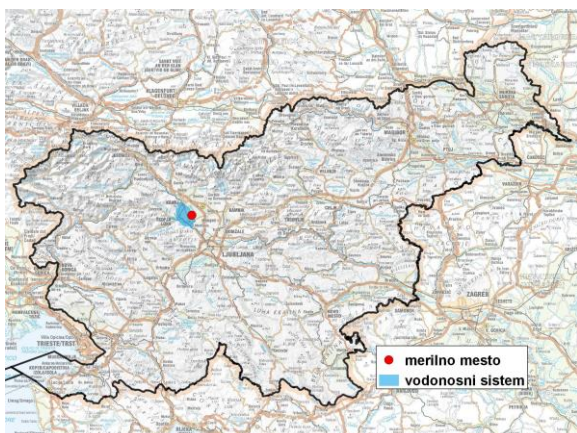


GROUNDWATER MONITORING SITE

Monitoring site code	80062
Monitoring site name	Mavčiče (VČ-1779)



General information about the monitoring site

Aquifer	Sorško polje
Groundwater body code	1001
Groundwater body name	Savska kotlina in Ljubljansko Barje
Aquifer system	Sorško polje
Start of observations	2000
End of observations	-
Surface altitude (m a. s. l.)	347.00
Last altitude of the point 0 (m a. s. l.)	347.65
Last altitude of the bottom (m a. s. l.)	302.85
D48/GK: GKX	454554; 115745
D96/TM: e; n	454183; 116232

Frequency of the measurements

Groundwater level	continuous
Temperature	1 per month
Specific electrical conductivity	-

Extremes 2001–2017

Groundwater level – period minimum (m a. s. l.)	331.58
Date of the minimum	26.02.2012
Groundwater level – period maximum (m a. s. l.)	335.87
Date of the maximum	27.02.2014

Mean values 2001–2017

	JAN	FEB	MAR	APR	MAY	JUN	JUL	AUG	SEP	OCT	NOV	DEC	PERIOD
m a.s.l.*	334.47	334.29	334.30	334.36	334.34	334.29	334.27	334.23	334.16	334.24	334.45	334.52	334.33
m**	13.18	13.36	13.35	13.29	13.31	13.36	13.38	13.42	13.49	13.41	13.20	13.13	13.32

* water table in meters above sea level; ** depth to water table in meters