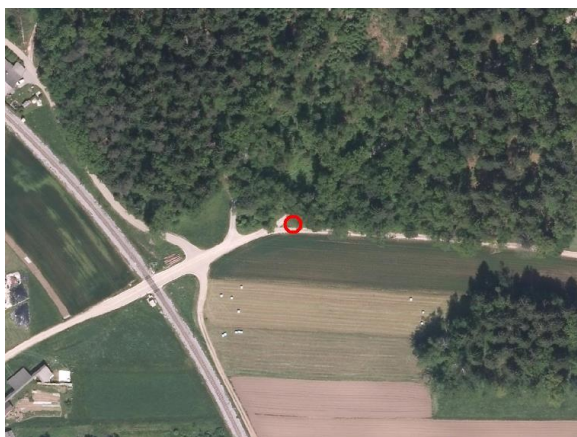
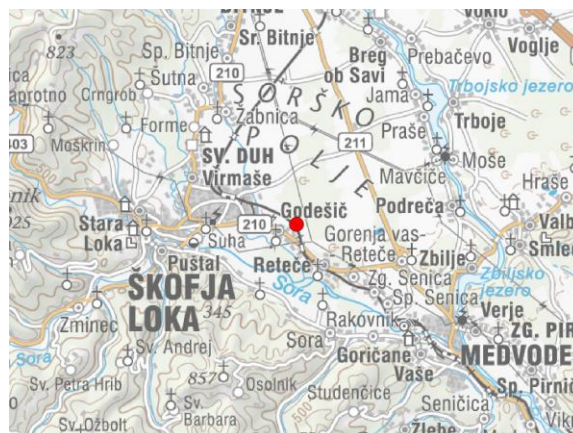
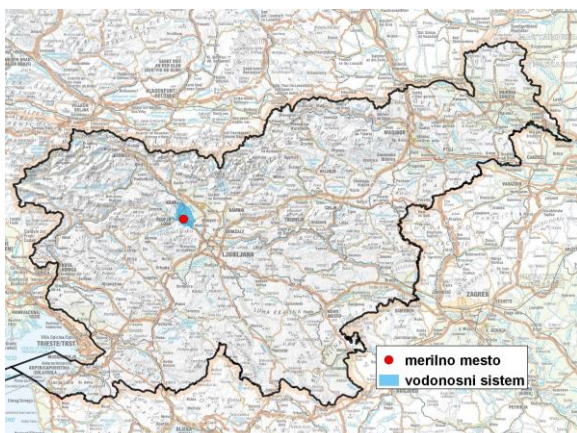


GROUNDWATER MONITORING SITE

Monitoring site code	80075
Monitoring site name	Godešič (S-1864)



General information about the monitoring site

Aquifer	Sorško polje
Groundwater body code	1001
Groundwater body name	Savska kotlina in Ljubljansko Barje
Aquifer system	Sorško polje
Start of observations	1970
End of observations	-
Surface altitude (m a. s. l.)	356.03
Last altitude of the point 0 (m a. s. l.)	356.81
Last altitude of the bottom (m a. s. l.)	322.97
D48/GK: GKY; GKX	450816; 113971
D96/TM: e; n	450445; 114458

Frequency of the measurements

Groundwater level	continuous
Temperature	continuous
Specific electrical conductivity	-

Extremes 1970–2017

Groundwater level – period minimum (m a. s. l.)	328.70
Date of the minimum	05.11.1971
Groundwater level – period maximum (m a. s. l.)	336.38
Date of the maximum	10.11.1990

Mean values 1970–2017

	JAN	FEB	MAR	APR	MAY	JUN	JUL	AUG	SEP	OCT	NOV	DEC	PERIOD
m a.s.l.*	331.67	331.58	331.59	331.75	331.66	331.53	331.43	331.30	331.25	331.44	331.66	331.81	331.56
m**	25.14	25.23	25.22	25.06	25.15	25.28	25.38	25.51	25.56	25.37	25.15	25.00	25.25

* water table in meters above sea level; ** depth to water table in meters