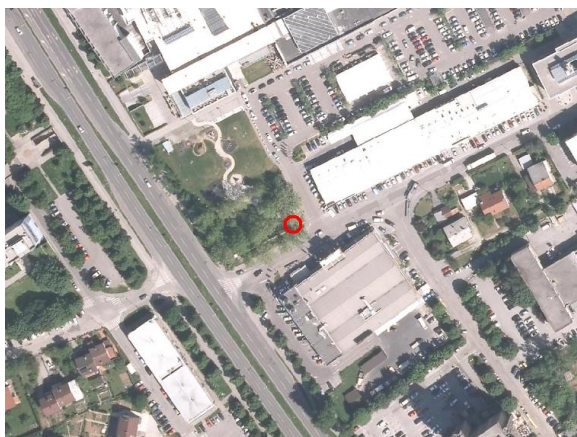
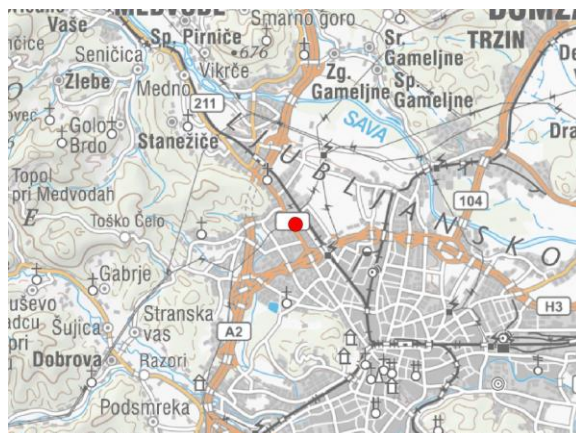
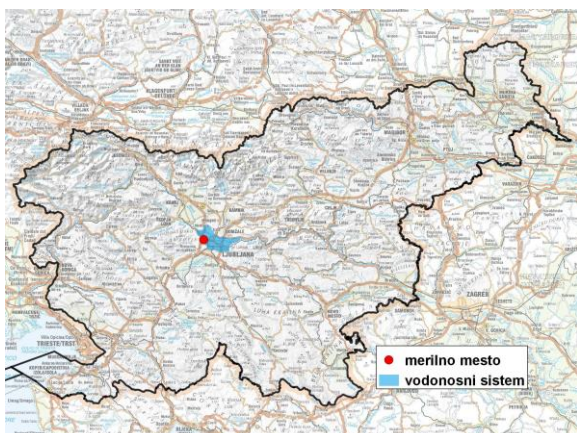


GROUNDWATER MONITORING SITE

Monitoring site code	85004
Monitoring site name	Lj-Mercator (De-0105)



General information about the monitoring site

Aquifer	Ljubljansko polje
Groundwater body code	1001
Groundwater body name	Savska kotlina in Ljubljansko Barje
Aquifer system	Ljubljansko polje
Start of observations	2005
End of observations	-
Surface altitude (m a. s. l.)	311.00
Last altitude of the point 0 (m a. s. l.)	311.34
Last altitude of the bottom (m a. s. l.)	0.00
D48/GK: GKY; GKX	459827; 104845
D96/TM: e; n	459456; 105332

Frequency of the measurements

Groundwater level	continuous
Temperature	continuous
Specific electrical conductivity	continuous

Extremes 2008–2017

Groundwater level – period minimum (m a. s. l.)	276.91
Date of the minimum	14.04.2012
Groundwater level – period maximum (m a. s. l.)	282.53
Date of the maximum	02.03.2014

Mean values 2008–2017

	JAN	FEB	MAR	APR	MAY	JUN	JUL	AUG	SEP	OCT	NOV	DEC	PERIOD
m a.s.l.*	279.13	279.06	279.30	279.27	279.06	278.78	278.65	278.45	278.46	278.69	279.07	279.63	278.96
m**	32.21	32.28	32.04	32.07	32.28	32.56	32.69	32.89	32.88	32.65	32.27	31.71	32.38

* water table in meters above sea level; ** depth to water table in meters