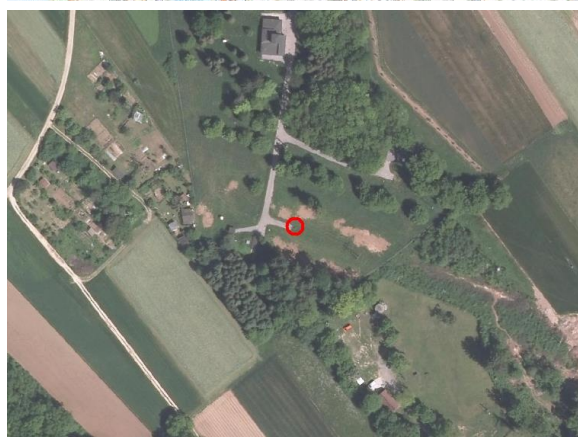
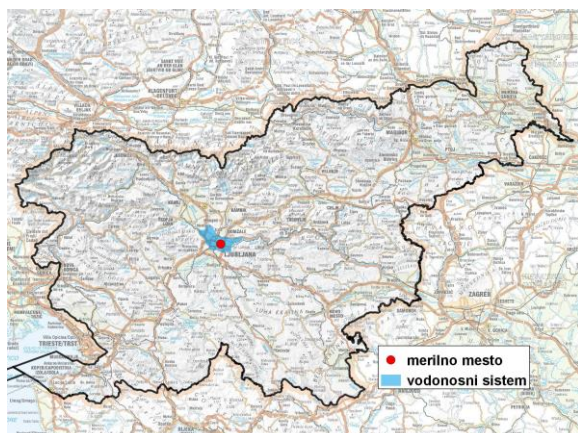


GROUNDWATER MONITORING SITE

Monitoring site code	85040
Monitoring site name	Hrastje (0341)



General information about the monitoring site

Aquifer	Ljubljansko polje
Groundwater body code	1001
Groundwater body name	Savska kotlina in Ljubljansko Barje
Aquifer system	Ljubljansko polje
Start of observations	1972
End of observations	-
Surface altitude (m a. s. l.)	287.00
Last altitude of the point 0 (m a. s. l.)	287.40
Last altitude of the bottom (m a. s. l.)	251.65
D48/GK: GKX	466492; 102909
D96/TM: e; n	466121; 103395

Frequency of the measurements

Groundwater level	continuous
Temperature	1 per month
Specific electrical conductivity	-

Extremes 1973–2017

Groundwater level – period minimum (m a. s. l.)	271.61
Date of the minimum	24.02.1989
Groundwater level – period maximum (m a. s. l.)	276.63
Date of the maximum	02.10.1973

Mean values 1973–2017

	JAN	FEB	MAR	APR	MAY	JUN	JUL	AUG	SEP	OCT	NOV	DEC	PERIOD
m a.s.l.*	273.93	273.76	273.77	274.04	274.04	273.95	273.86	273.68	273.75	274.05	274.23	274.14	273.93
m**	13.47	13.64	13.63	13.36	13.36	13.45	13.54	13.72	13.65	13.35	13.17	13.26	13.47

* water table in meters above sea level; ** depth to water table in meters