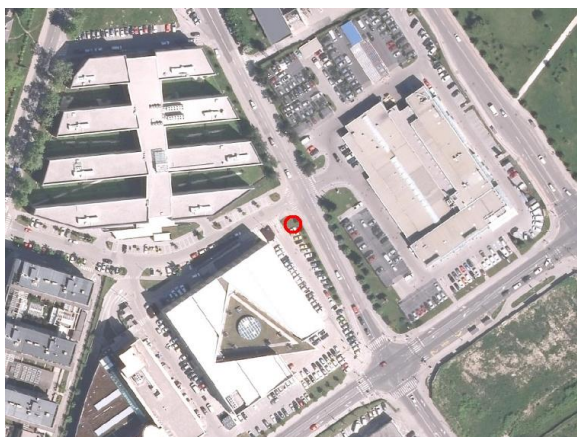
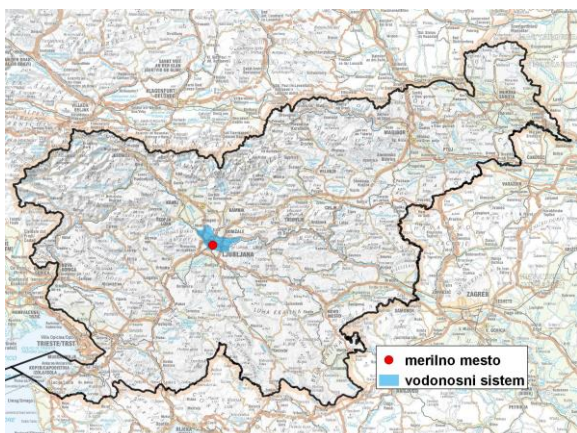


GROUNDWATER MONITORING SITE

Monitoring site code	85065
Monitoring site name	Lj. - Flajšmanova (Fip-1/04)



General information about the monitoring site

Aquifer	Ljubljansko polje
Groundwater body code	1001
Groundwater body name	Savska kotlina in Ljubljansko Barje
Aquifer system	Ljubljansko polje
Start of observations	2005
End of observations	-
Surface altitude (m a. s. l.)	296.96
Last altitude of the point 0 (m a. s. l.)	296.96
Last altitude of the bottom (m a. s. l.)	192.16
D48/GK: GKY; GKX	463844; 102415
D96/TM: e; n	463474; 102901

Frequency of the measurements

Groundwater level	continuous
Temperature	1 per month
Specific electrical conductivity	-

Extremes 2006–2017

Groundwater level – period minimum (m a. s. l.)	275.01
Date of the minimum	05.04.2012
Groundwater level – period maximum (m a. s. l.)	278.53
Date of the maximum	24.02.2014

Mean values 2006–2017

	JAN	FEB	MAR	APR	MAY	JUN	JUL	AUG	SEP	OCT	NOV	DEC	PERIOD
m a.s.l.*	276.30	276.24	276.35	276.37	276.28	276.17	276.04	275.88	276.03	276.13	276.40	276.53	276.23
m**	20.66	20.72	20.61	20.59	20.68	20.79	20.92	21.08	20.93	20.83	20.56	20.43	20.73

* water table in meters above sea level; ** depth to water table in meters