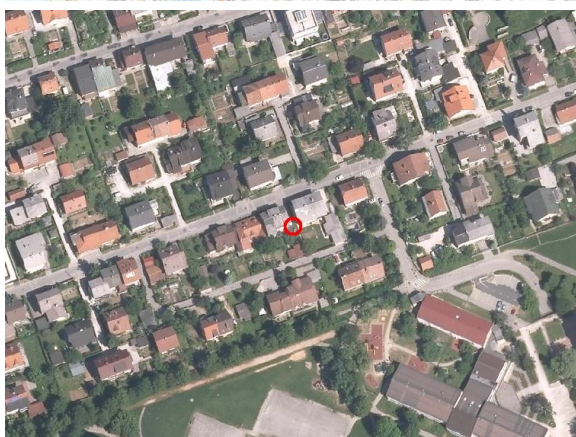
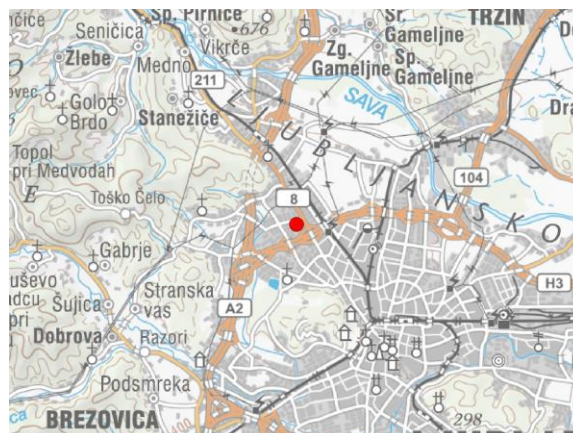
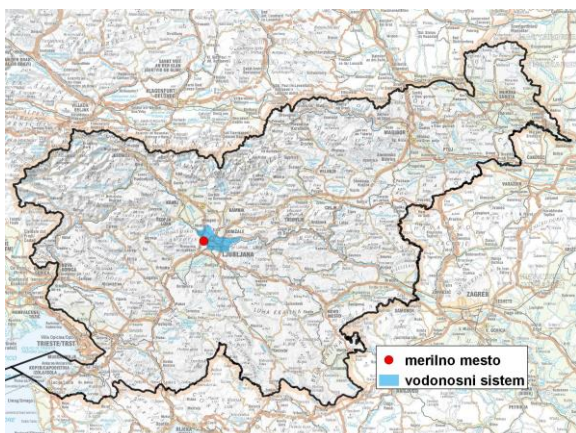


GROUNDWATER MONITORING SITE

Monitoring site code	85073
Monitoring site name	Lj. - Sojerjeva (0631)



General information about the monitoring site

Aquifer	Ljubljansko polje
Groundwater body code	1001
Groundwater body name	Savska kotlina in Ljubljansko Barje
Aquifer system	Ljubljansko polje
Start of observations	2008
End of observations	-
Surface altitude (m a. s. l.)	309.34
Last altitude of the point 0 (m a. s. l.)	309.94
Last altitude of the bottom (m a. s. l.)	282.00
D48/GK: GKY; GKX	459845; 104231
D96/TM: e; n	459474; 104717

Frequency of the measurements

Groundwater level	continuous
Temperature	continuous
Specific electrical conductivity	-

Extremes 2012–2017

Groundwater level – period minimum (m a. s. l.)	282.24
Date of the minimum	17.08.2012
Groundwater level – period maximum (m a. s. l.)	304.88
Date of the maximum	09.11.2014

Mean values 2012–2017

	JAN	FEB	MAR	APR	MAY	JUN	JUL	AUG	SEP	OCT	NOV	DEC	PERIOD
m a.s.l.*	288.41	293.36	291.04	287.97	289.55	287.65	286.07	285.51	290.57	289.04	294.66	290.22	289.50
m**	21.53	16.58	18.90	21.97	20.39	22.29	23.87	24.43	19.37	20.90	15.28	19.72	20.44

* water table in meters above sea level; ** depth to water table in meters