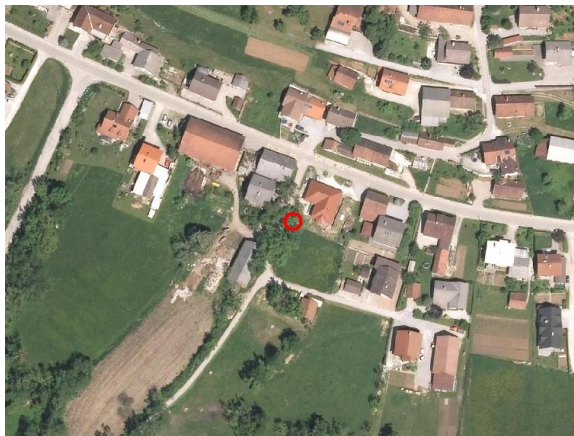
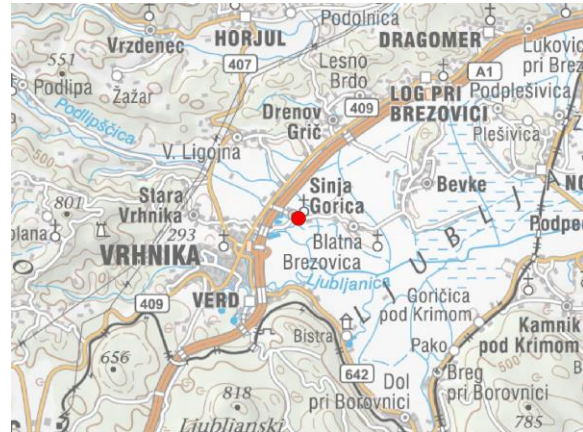
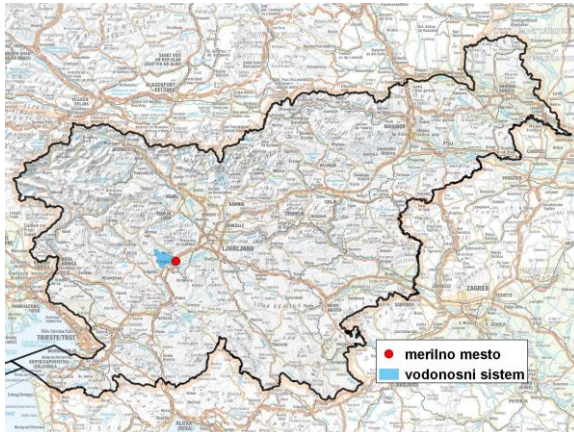


GROUNDWATER MONITORING SITE

Monitoring site code	90005
Monitoring site name	Sinja Gorica (0860)



General information about the monitoring site

Aquifer	Ljubljansko barje
Groundwater body code	1007
Groundwater body name	Cerkljansko, Škofjeloško in Polhograjsko hribovje
Aquifer system	Vrhnika
Start of observations	1958
End of observations	-
Surface altitude (m a. s. l.)	292.77
Last altitude of the point 0 (m a. s. l.)	293.43
Last altitude of the bottom (m a. s. l.)	289.72
D48/GK: GKX	447483; 92559
D96/TM: e; n	447112; 93046

Frequency of the measurements

Groundwater level	6 per month
Temperature	1 per month
Specific electrical conductivity	-

Extremes 1958–2017

Groundwater level – period minimum (m a. s. l.)	289.65
Date of the minimum	05.09.2013
Groundwater level – period maximum (m a. s. l.)	292.26
Date of the maximum	25.12.2010

Mean values 1958–2017

	JAN	FEB	MAR	APR	MAY	JUN	JUL	AUG	SEP	OCT	NOV	DEC	PERIOD
m a.s.l.*	290.90	290.92	290.91	290.94	290.78	290.67	290.54	290.46	290.62	290.80	290.94	290.99	290.79
m**	2.53	2.51	2.52	2.49	2.65	2.76	2.89	2.97	2.81	2.63	2.49	2.44	2.64

* water table in meters above sea level; ** depth to water table in meters