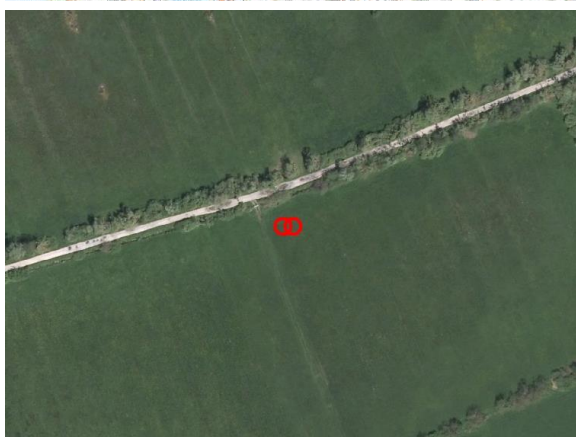
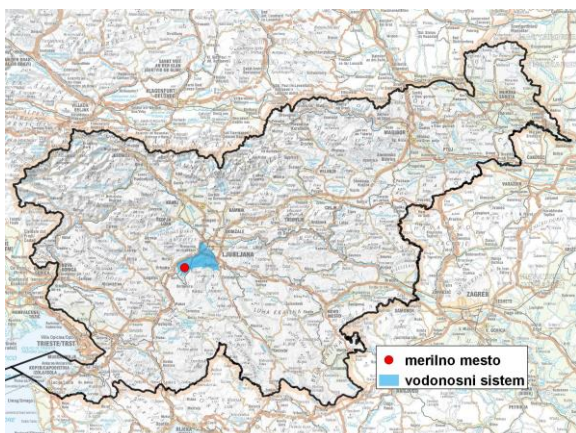


GROUNDWATER MONITORING SITE

| | |
|----------------------|---------------------------|
| Monitoring site code | 90015 |
| Monitoring site name | Bevke (Bev - 1/15) |



General information about the monitoring site

| | |
|--|-------------------------------------|
| Aquifer | Ljubljansko barje |
| Groundwater body code | 1001 |
| Groundwater body name | Savska kotlina in Ljubljansko Barje |
| Aquifer system | Ljubljansko Barje |
| Start of observations | 2015 |
| End of observations | - |
| Surface altitude (m a. s. l.) | 287.60 |
| Last altitude of the point 0 (m a. s. l.) | 289.79 |
| Last altitude of the bottom (m a. s. l.) | 223.60 |
| D48/GK: GKY; GKX | 451344; 92351 |
| D96/TM: e; n | 450973; 92838 |

Frequency of the measurements

| | |
|---|------------|
| Groundwater level | continuous |
| Temperature | continuous |
| Specific electrical conductivity | continuous |

Extremes 2016–2017

| | |
|--|------------|
| Groundwater level – period minimum (m a. s. l.) | 287.77 |
| Date of the minimum | 20.09.2016 |
| Groundwater level – period maximum (m a. s. l.) | 289.48 |
| Date of the maximum | 08.03.2016 |

Mean values 2016–2017

| | JAN | FEB | MAR | APR | MAY | JUN | JUL | AUG | SEP | OCT | NOV | DEC | PERIOD |
|-----------|--------|--------|--------|--------|--------|--------|--------|--------|--------|--------|--------|--------|--------|
| m a.s.l.* | 288.40 | 288.91 | 288.93 | 288.56 | 288.68 | 288.64 | 288.54 | 288.17 | 288.35 | 288.49 | 288.86 | 288.96 | 288.62 |
| m** | 1.39 | 0.88 | 0.86 | 1.23 | 1.11 | 1.15 | 1.25 | 1.62 | 1.44 | 1.30 | 0.93 | 0.83 | 1.17 |

* water table in meters above sea level; ** depth to water table in meters