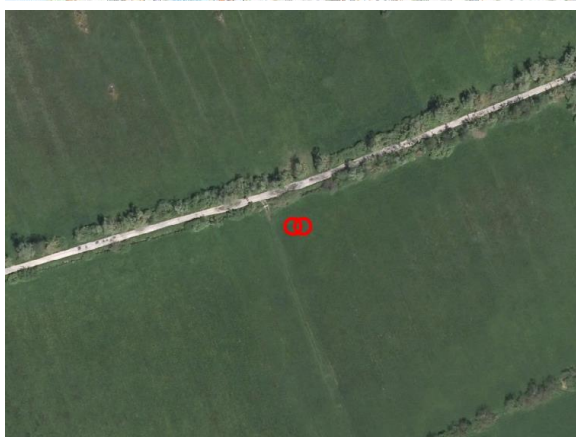
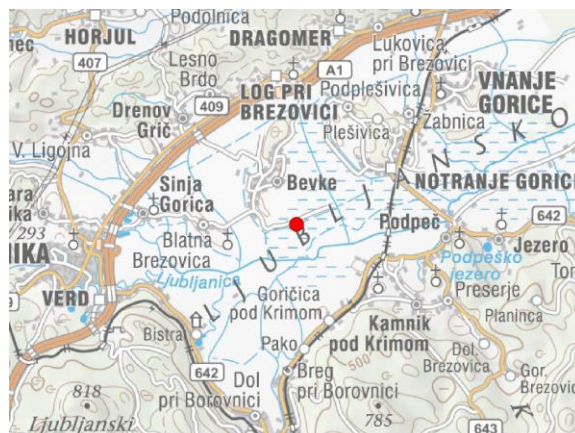
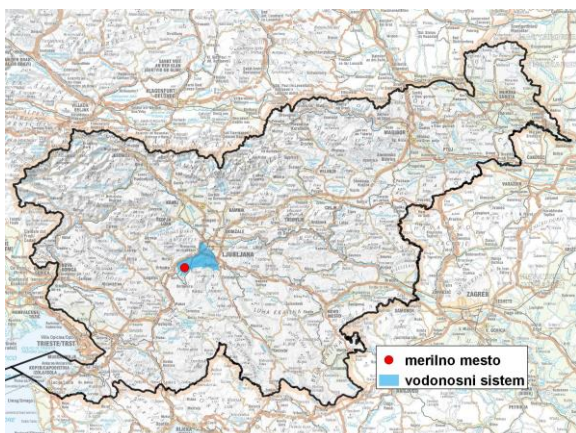


GROUNDWATER MONITORING SITE

Monitoring site code	90016
Monitoring site name	Bevke (Bev - 2/15)



General information about the monitoring site

Aquifer	Ljubljansko barje
Groundwater body code	1001
Groundwater body name	Savska kotlina in Ljubljansko Barje
Aquifer system	Ljubljansko Barje
Start of observations	2015
End of observations	-
Surface altitude (m a. s. l.)	287.60
Last altitude of the point 0 (m a. s. l.)	289.80
Last altitude of the bottom (m a. s. l.)	260.80
D48/GK: GKX	451350; 92351
D96/TM: e; n	450979; 92838

Frequency of the measurements

Groundwater level	continuous
Temperature	continuous
Specific electrical conductivity	continuous

Extremes 2015–2017

Groundwater level – period minimum (m a. s. l.)	287.87
Date of the minimum	05.12.2015
Groundwater level – period maximum (m a. s. l.)	288.25
Date of the maximum	03.03.2016

Mean values 2015–2017

	JAN	FEB	MAR	APR	MAY	JUN	JUL	AUG	SEP	OCT	NOV	DEC	PERIOD
m a.s.l.*	288.04	288.08	288.08	288.06	288.07	288.06	288.05	288.01	288.07	288.03	288.07	288.03	288.05
m**	1.76	1.72	1.72	1.74	1.73	1.74	1.75	1.79	1.73	1.77	1.73	1.77	1.75

* water table in meters above sea level; ** depth to water table in meters