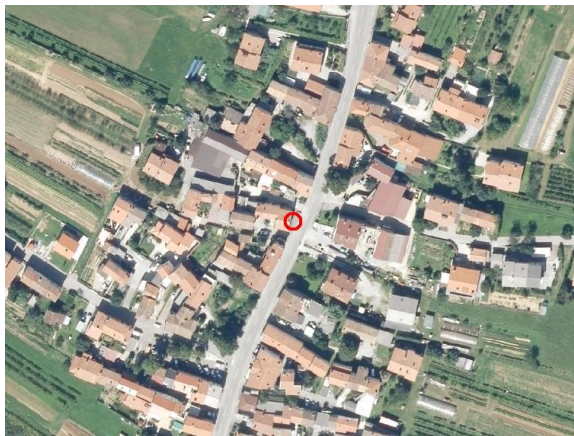
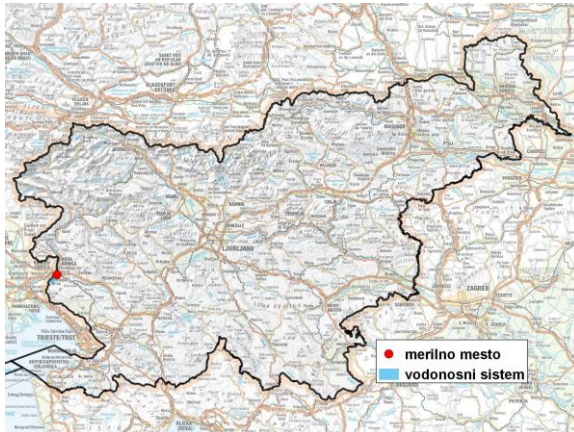


GROUNDWATER MONITORING SITE

Monitoring site code	95048
Monitoring site name	Vrtojba (0241)



General information about the monitoring site

Aquifer	Vipavsko - Soška dolina
Groundwater body code	6021
Groundwater body name	Goriška brda in Trnovsko-Banjška planota
Aquifer system	Vrtojbensko polje
Start of observations	2000
End of observations	-
Surface altitude (m a. s. l.)	64.05
Last altitude of the point 0 (m a. s. l.)	65.03
Last altitude of the bottom (m a. s. l.)	39.20
D48/GK: GKY; GKX	394607; 86504
D96/TM: e; n	394235; 86991

Frequency of the measurements

Groundwater level	continuous
Temperature	continuous
Specific electrical conductivity	-

Extremes 2000–2017

Groundwater level – period minimum (m a. s. l.)	43.09
Date of the minimum	18.11.2006
Groundwater level – period maximum (m a. s. l.)	61.41
Date of the maximum	27.10.2012

Mean values 2000–2017

	JAN	FEB	MAR	APR	MAY	JUN	JUL	AUG	SEP	OCT	NOV	DEC	PERIOD
m a.s.l.*	45.48	45.67	45.26	44.85	45.29	44.84	44.66	44.48	44.41	44.64	45.12	45.37	45.01
m**	19.55	19.36	19.77	20.18	19.74	20.19	20.37	20.55	20.62	20.39	19.91	19.66	20.02

* water table in meters above sea level; ** depth to water table in meters