

CLIMATE CHANGE AND IMPACT ON PUBLIC WATER SUPPLY

—

case study of Ljubljana Field and Mura Valley (Slovenia)



Branka Bračič Železnik, Public Water Utility Ljubljana



Petra Souvent, Slovenian Environment Agency



Barbara Čenčur Curk, Univ. of Ljubljana, Fac. of Natural Sci. and Eng.

Jointly for our common future

INTRODUCTION

the main drinking water supply problem

significant changes of groundwater quantity and quality
observed in the last decades

land use practices & very likely also climate change

SEE projects CC-WaterS (Climate Change and Impact on Water Supply) and CC-WARE (Mitigating Vulnerability of Water Resources under Climate Change)

→ a water supply management system



SLOVENIAN TEST SITES

Ljubljana field



Mura valley



BASIC DATA	LJUBLJANA FIELD	MURA VALLEY
Size: Length/Width	20,14 km / 11,14 km	53,23 km / 20,25 km
Height (m a.s.l.)	254,5 - 639,4	146,2 - 328,4
Average ann. precipitation (1961-1990)	1358 mm	817,42 mm
Mean ann. temperature (1961-1990)	9 °C	9,5 °C
Permeability (mean)	$10^{-2} - 3,7 \cdot 10^{-3}$ m/s	10^{-4} m/s
Depth to GW (mean)	5 - 30 m	4 m



CLIMATE CHANGE SCENARIOS

- Emission scenario SRES A1B
- Future periods: 2021-2051, 2071-2100
- RCM: ALADIN, Promes, RegCM3

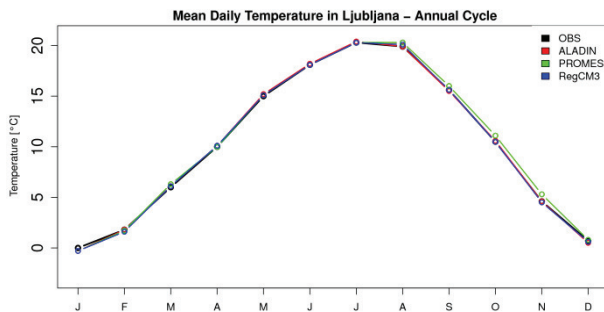
RCM bias corrected to EOBS db
grid $0,25^\circ \times 0,25^\circ$ (averaged relief –
differences in mountainous areas)



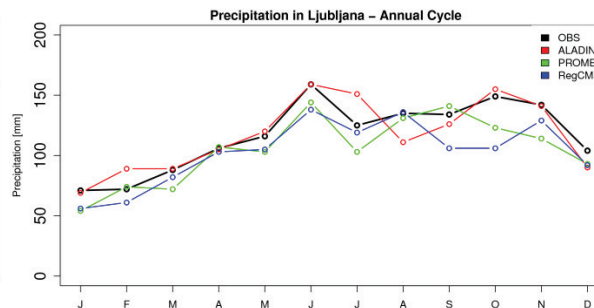
RCM adjusted to local observ.
– quantile mapping approach

Location	Monitoring station altitude	Corresponding EOBS cell altitude
Kredarica	2514 m	1336 m
Ljubljana	299 m	385 m
Murska Sobota	188 m	221 m

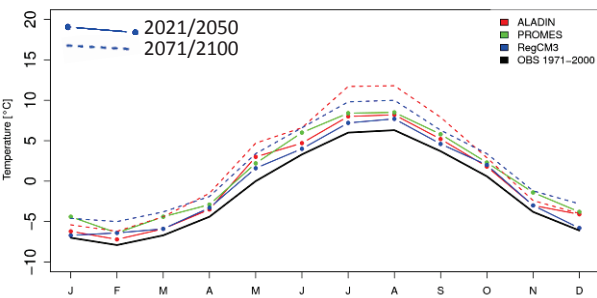
RCMcorr_adj and OBS:



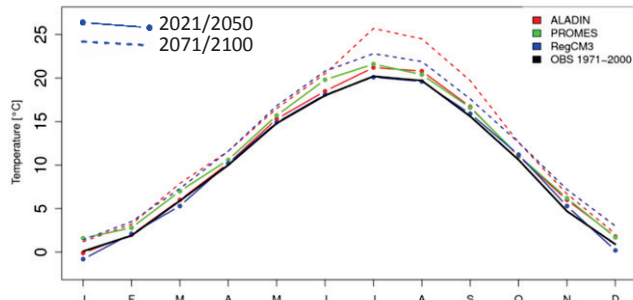
RCMcorr_adj and OBS:



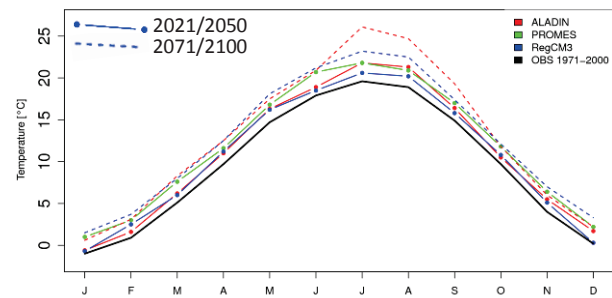
RCMcorr_adj: Mean Daily Temperature in Kredarica



RCMcorr: Mean Daily Temperature in Ljubljana



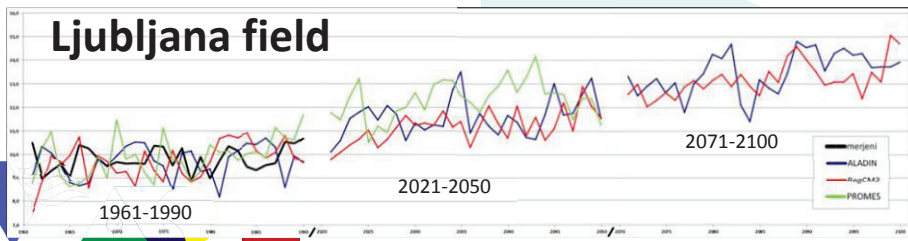
RCMcorr_adj: Mean Daily Temperature in Murska_Sobota



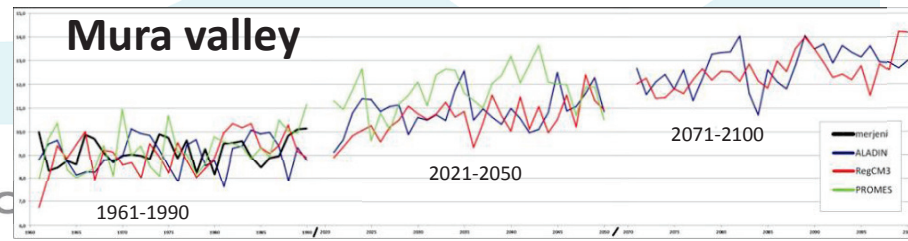
air temp. differences (yearly averages)
between 2021-2050 / 2071-2100 and 1970-2000 [°C]

Model	KREDARICA	LJUBLJANA	MURSKA SOBOTA
ALADIN	1,4 / 3,1	1,4 / 3,2	1,4 / 3,2
PROMES	2 / NA	2 / NA	2 / NA
RegCM3	1,2 / 3,3	1,3 / 3,0	1,2 / 3,0

Ljubljana field

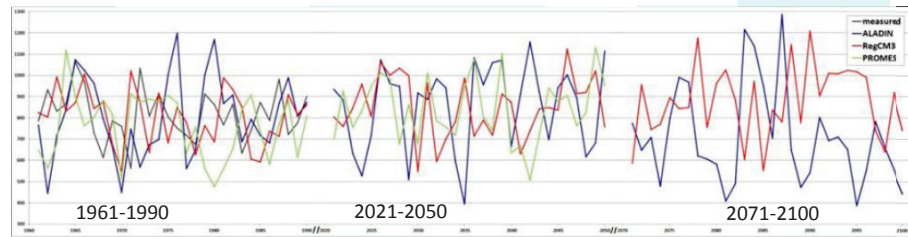
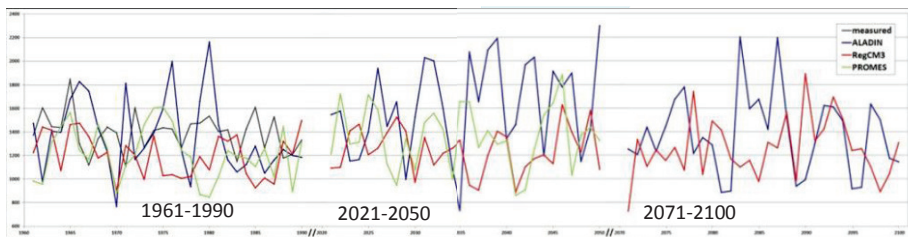
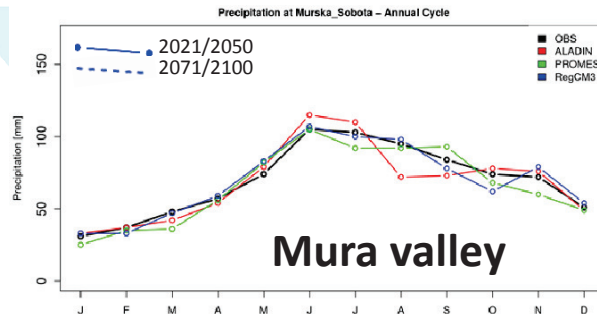
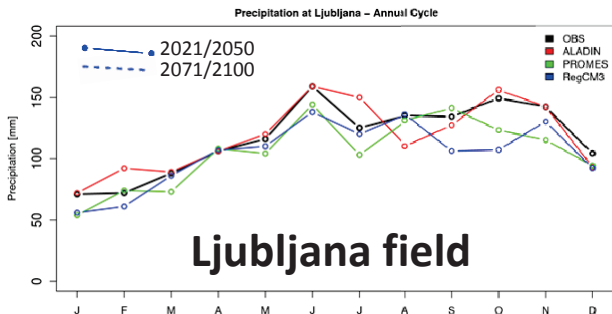


Mura valley



CLIMATE CHANGE

PRECIPITATION

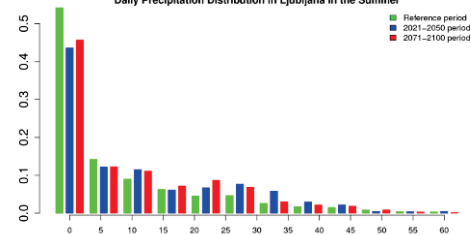
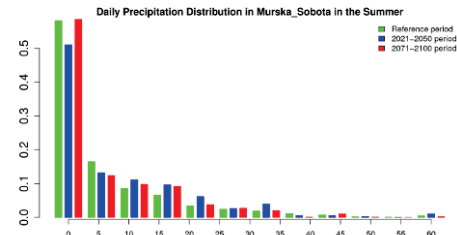


ALADIN
Daily Precipitation Distribution in Ljubljana in the Summer

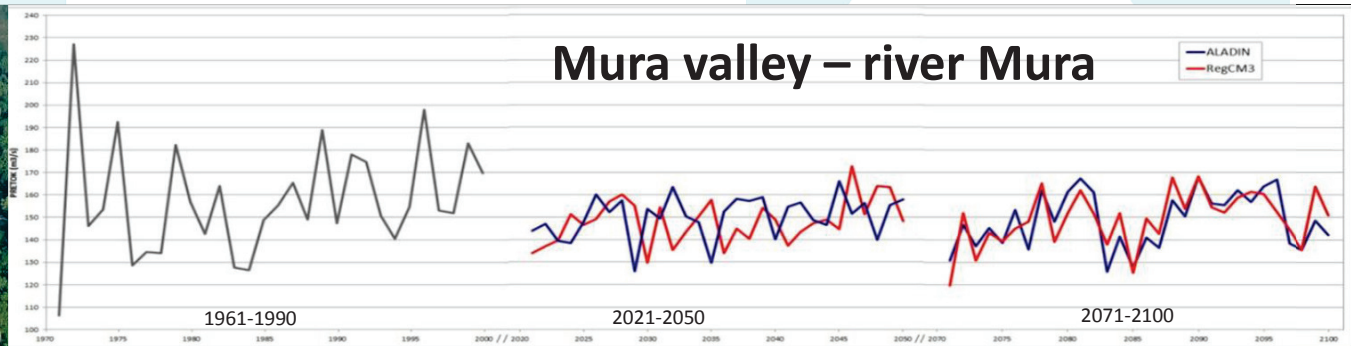
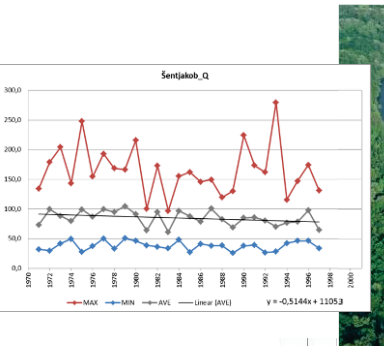
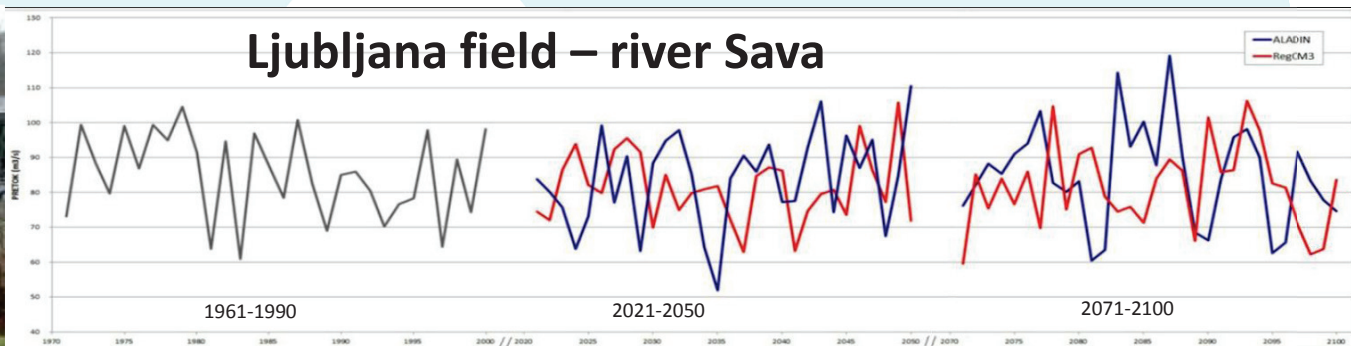
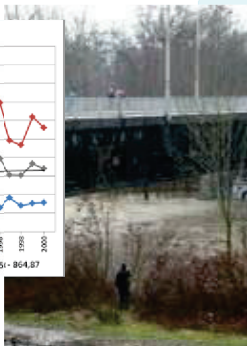
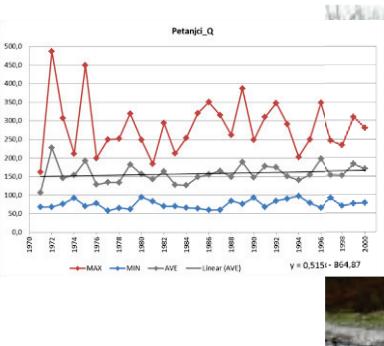
Annual precipitation in reference (1971-2000) and future periods (2021-2050 and 2071-2100) [mm]

Model	KREDARICA	LJUBLJANA	MURSKA SOBOTA
ALADIN	2119 / 2201 / 1973	1371 / 1611 / 1385	806 / 855 / 709
PROMES	2072 / 2186 / -	1219 / 1354 / NA	760 / 842 / -
RegCM3	2115 / 2193 / 2138	1201 / 1244 / 1261	802 / 850 / 878

ALADIN



CC SURFACE WATER DISCHARGE





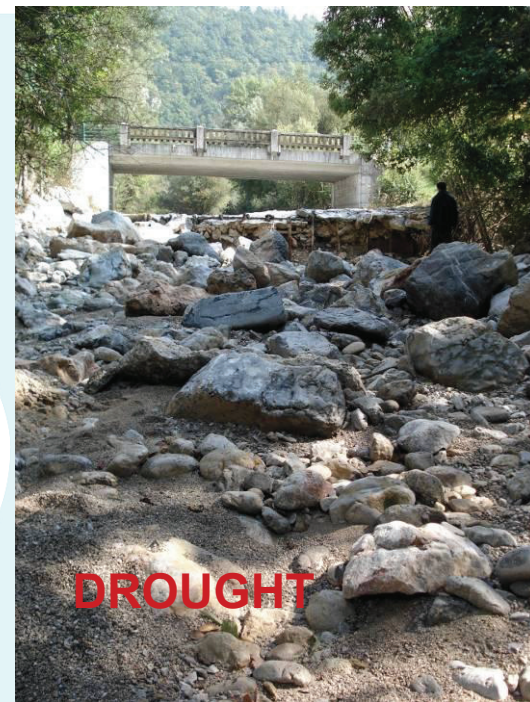
water wellfield Mura valley

FLOODS



Ljubljana Vič 19.9.2010 (foto: J. Polajnar)

Ljubljana sep.2010

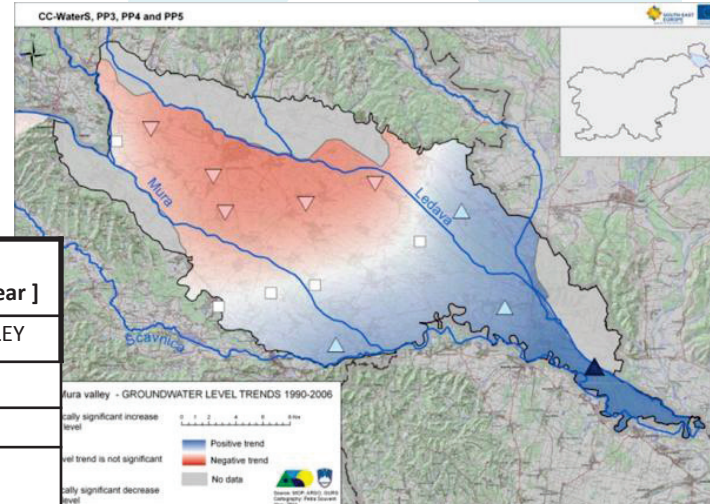
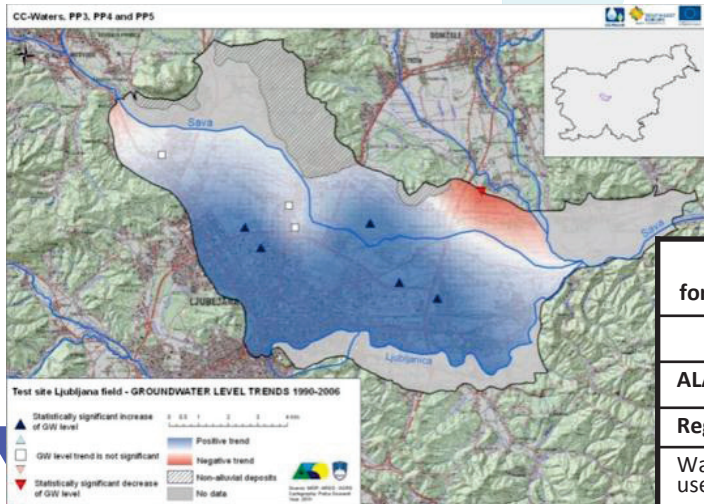
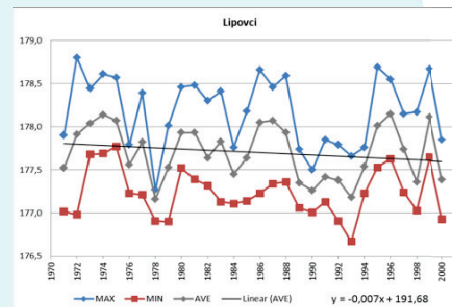
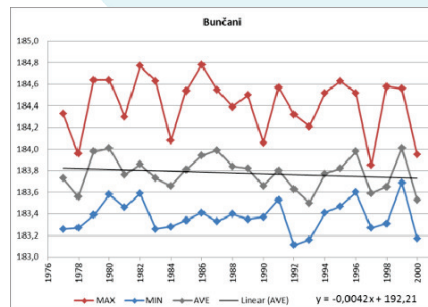
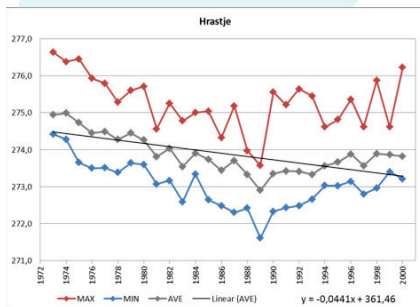
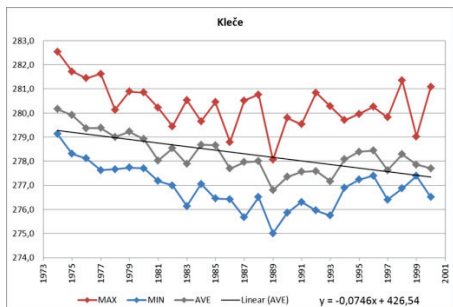


Ljubljana sep. 2011-Mar.2012

GROUNDWATER LEVEL TRENDS

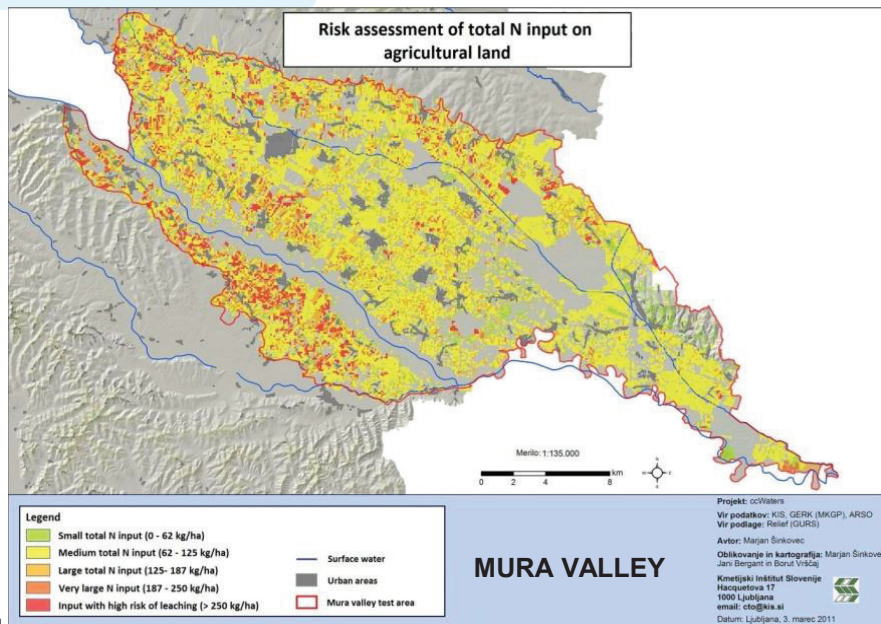
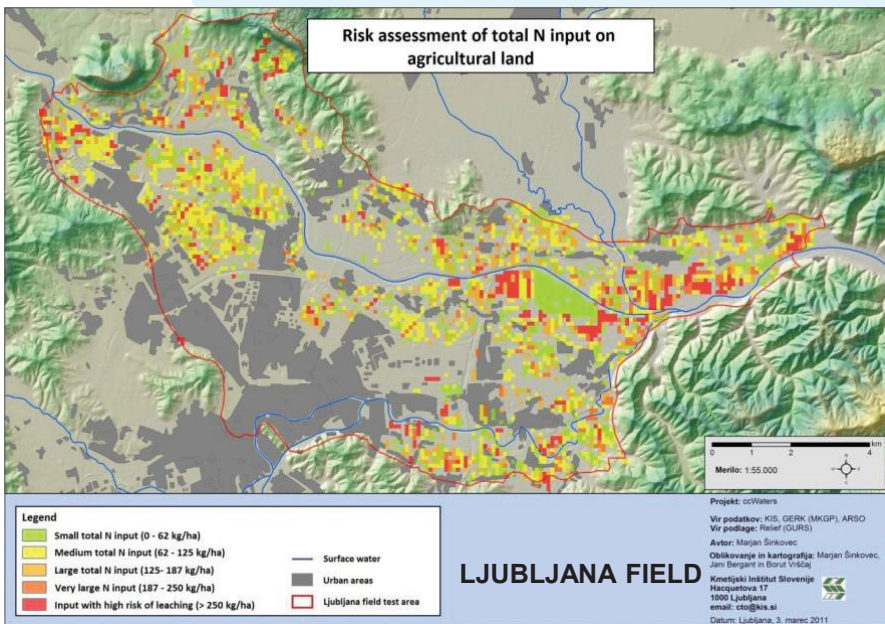
Ljubljana field

Mura valley

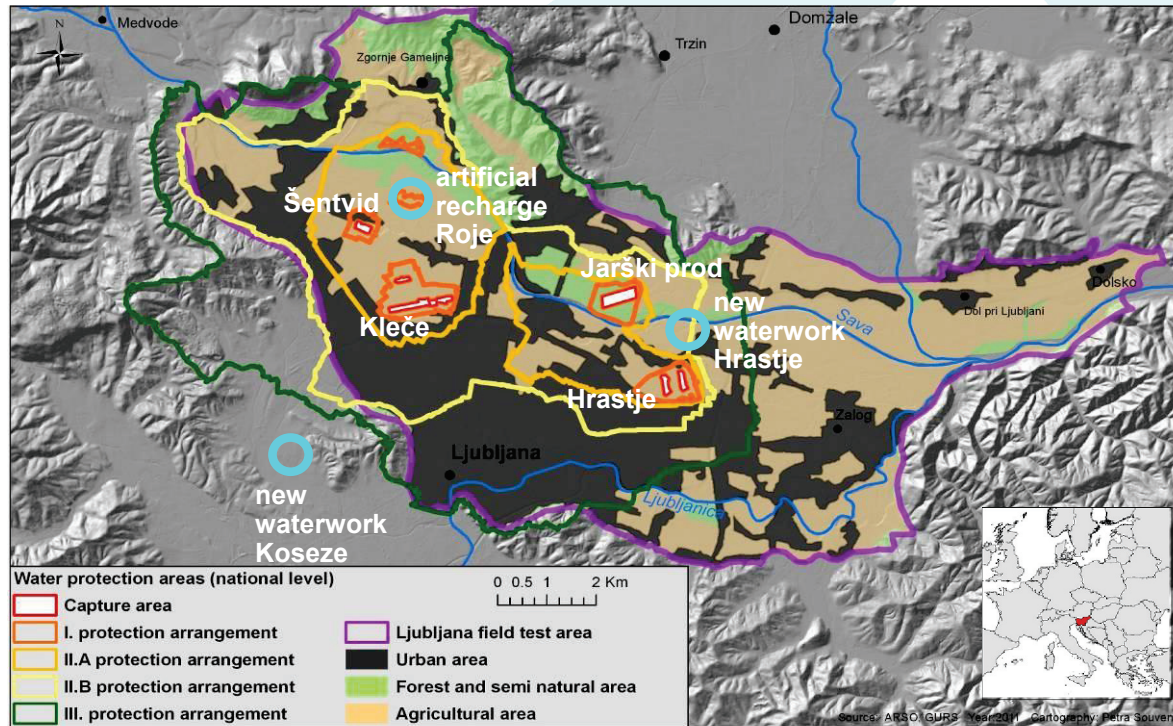


Available water resources and water use for 1971-2000 / 2021-2050 / 2071-2100 [Mm ³ /year]		
	LIUBLJANA FIELD	MURA VALLEY
ALADIN	81 / 91 / 75	78 / 73 / 48
RegCM3	87 / 87 / 86	72 / 73 / 75
Water use	20,2 / 20,7 / 21,4	3,8 / 3,5 / 3,2

CC NITRATE LEACHING



	LJUBLJANA FIELD	MURA VALLEY
Agricultural areas	3.180 ha (43 %)	32.596 ha (73 %)
Crops	silage corn, vegetables, winter wheat, potatoes	corn, oil rape
N input > 250 kg/ha (red areas)	12,6 % of agricult. areas	6,3 % of agricult. areas
N leaching in next decades	increase of about 5 %	increase of about 5 %



Fuzzy Decimaker' - a non-probabilistic risk analysis, based on simplified fuzzy set mathematics:

1. formulation of alternative manag. actions
2. defining of the ranking criteria structure
3. estimation of each managem
4. ranking of the according to the

- 2 CC 2021-2050
- 3 CC1 A.I.Klece+W01
- 4 CC1 A.I.Klece+W01+2
- 5 CC1 A.I.Klece+W.Treat.
- 6 CC1 W. treatment
- 7 CC1 W.Hrastje+W01
- 8 CC1 W.Hrastje+W01+2
- 9 CC1 W.Hrastje+W.Treat.
- 10 CC1 W.Koseze+W01
- 11 CC1 W.Koseze+W01+2
- 12 CC1 W.Koseze+W.Treat.

Lee, Y.W., Bogardi, I., Stansbury, J. 1991: Fuzzy Decision Making in Dredged-Material Mana

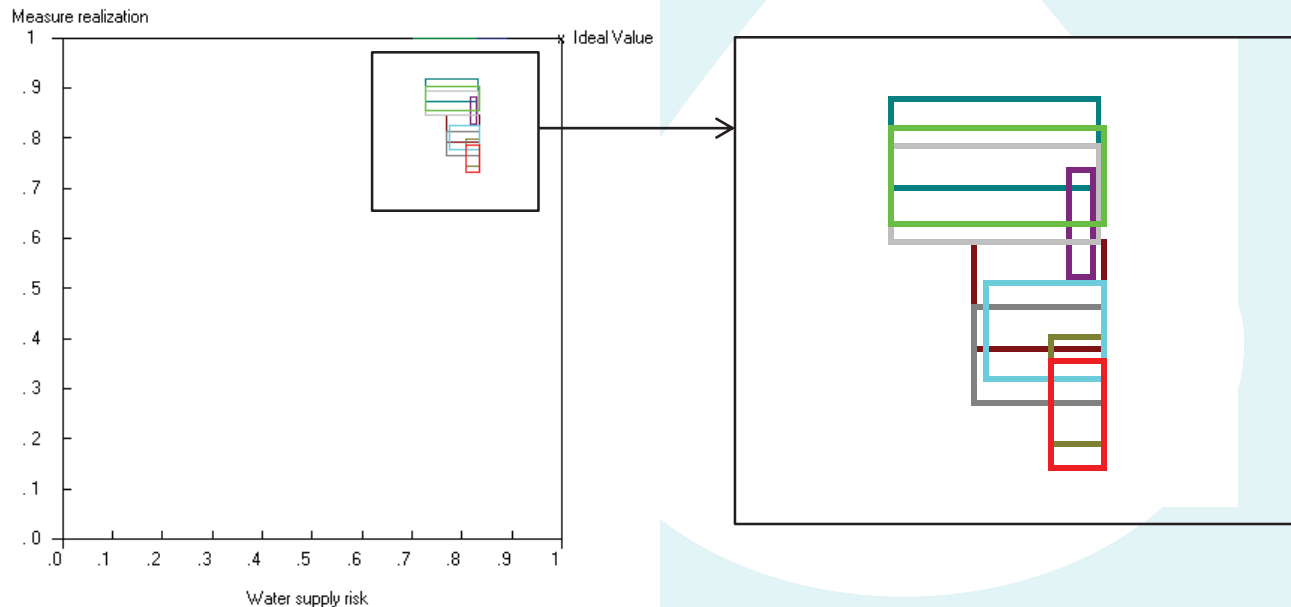
Jointly for our common future

WATER SUPPLY MANAGEMENT OPTIONS

	Current price of water for standard use (€/m ³)	Increase of price (€/m ³)	New price of water (€/m ³)
GW treatment	0,4963	0,1330	0,6293
Reimbursements for limited agricultural activities on VVO-I		0,0053	0,5016

Jointly for our common future

Fuzzy Composite Index



- 2 CC 2021-2050
- 3 CC1 A.I.Klece+W01
- 4 CC1 A.I.Klece+W01+2
- 5 CC1 A.I.Klece+W.Treat.
- 6 CC1 W. treatment
- 7 CC1 W.Hrastje+W01
- 8 CC1 W.Hrastje+W01+2
- 9 CC1 W.Hrastje+W.Treat.
- 10 CC1 W.Koseze+W01
- 11 CC1 W.Koseze+W01+2
- 12 CC1 W.Koseze+W.Treat.

CONCLUSIONS

- worst case scenarios (max T, P & min. river discharges)

decrease in future GW recharge

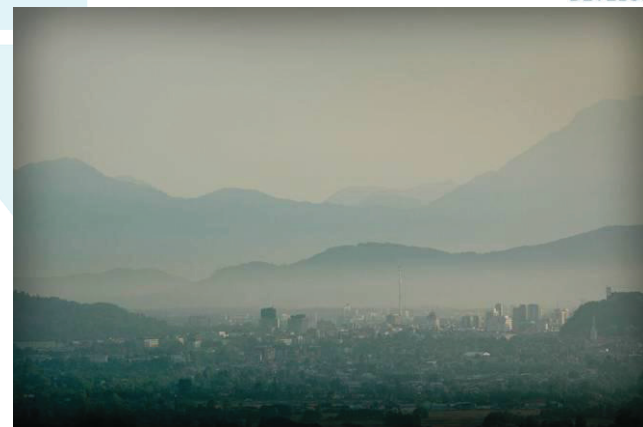
best case → no change in future GW recharge

- There is a need for water supply management adaptation measures, that should managing the risks associated with future climate change impacts

- management options can be:

- engineering interventions to enhance water resources, e.g. storage reservoirs, or to reduce water losses
- legislative management options: higher restrictions of land uses in the recharge area or enlargement of water protection areas
- water demand management
 - engineering interventions: e.g. recycling
 - economic actions: e.g. change of water pricing
 - social actions: public awareness for non wasteful water use

	LJUBLJANA FIELD	MURA VALLEY →
2021-2050	↑ 12 %	↓ 6%
2071-2100	↓ 7 %	↓ 38 %



<http://www.ccwaters.eu>

<http://www.ccware.eu>



Jointly for our common future