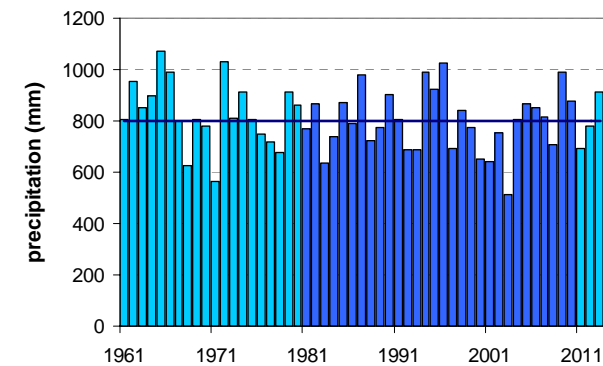
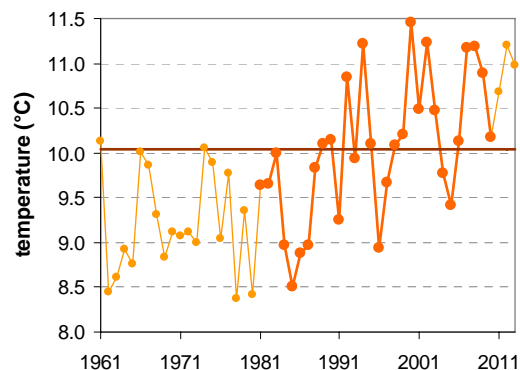


# MURSKA SOBOTA

Latitude: 46° 39'

Longitude: 16° 12'

Elevation: 188 m a. s. l.



	JAN	FEB	MAR	APR	MAY	JUN	JUL	AUG	SEP	OCT	NOV	DEC	YEAR
mean monthly temperature (°C)*	-1.1	0.8	5.5	10.5	15.7	18.8	20.6	19.7	15.2	10.2	4.6	0.1	10.0
mean daily maximum for a month (°C)*	2.9	6.0	11.2	16.4	21.5	24.6	27.0	26.4	21.6	15.9	8.8	3.4	15.5
mean daily minimum for a month (°C)*	-4.8	-3.8	0.3	4.6	9.4	12.7	14.4	13.9	10.1	5.7	1.1	-3.0	5.1
absolute monthly maximum (°C)	18.6	21.7	25.3	27.9	32.9	35.4	39.1	38.4	31.1	27.2	22.6	19.8	39.1
absolute monthly minimum (°C)	-26.9	-26.4	-20.5	-5.8	-2.0	2.5	5.6	4.0	-1.7	-8.5	-16.6	-22.0	-26.9
number of days with max. temperature < 0 °C	10	4	1	0	0	0	0	0	0	0	1	7	23
number of days with min. temperature < 0 °C	27	23	14	4	0	0	0	0	0	4	13	23	106
number of days with max. temperature > 25 °C	0	0	0	0	7	14	21	20	6	0	0	0	69
number of days with max. temperature > 30 °C	0	0	0	0	1	3	7	6	0	0	0	0	16
bright sunshine duration (in hours)*	75	114	149	191	243	247	279	258	190	138	77	59	2019
mean monthly relative humidity at 7 a.m. (%)	92	90	90	88	85	84	85	90	94	94	93	92	90
mean monthly relative humidity at 2 p.m. (%)	75	62	56	51	51	53	50	51	56	63	73	80	60
mean monthly relative humidity at 9 p.m. (%)	88	82	76	73	76	80	80	84	89	90	90	90	83
mean cloud amount at 7 a.m. (in tenths)	7.3	6.6	6.6	6.0	5.5	5.6	4.9	4.9	6.1	7.2	7.6	7.8	6.3
mean cloud amount at 2 p.m. (in tenths)	7.0	6.1	6.6	6.7	6.2	6.1	5.3	5.2	5.7	6.0	7.1	7.4	6.3
mean cloud amount at 9 p.m. (in tenths)	6.2	5.3	5.3	5.2	5.0	5.3	4.6	4.1	4.4	4.7	6.2	6.9	5.3
number of clear days (cloudiness < 2/10)	4	5	4	4	4	4	6	8	6	3	3	2	50
number of cloudy days (cloudiness > 8/10)	14	10	11	9	7	7	5	5	8	9	14	17	116
total amount of precipitation (mm)*	31	34	49	52	75	103	86	102	89	66	62	50	798
number of days with precipitation 0.1 mm or more	8	8	10	12	12	14	12	11	11	10	11	11	132
number of days with precipitation 1 mm or more	5	5	6	8	9	10	9	9	8	7	7	7	90
number of days with precipitation 10 mm or more	1	1	1	1	2	4	3	3	3	2	2	2	26
number of days with snow cover at 7 a.m.	13	11	4	0	0	0	0	0	0	0	2	9	39
mean snow cover depth at 7 a.m. (cm)*	4	5	1	0	0	0	0	0	0	0	1	3	1.1
maximum snow cover depth at 7 a.m. (cm)	44	61	39	8	0	0	0	0	0	5	35	46	61
mean new snow cover depth (cm)*	—	—	—	—	—	—	—	—	—	—	—	—	—

\* homogenised values

Time period: 1981–2010